

**PANTUM**

# **UNCOMPROMISING SAFETY UNMATCHED EFFICIENCY**

---

## **MONOCHROME LASER PRINTER**

BP5200 SERIES/BM5220 SERIES/BM5300 SERIES





In today's demanding corporate landscape, businesses require a printer that can handle high-volume tasks while ensuring data security and operational efficiency. The Pantum Elite Pro Series is meticulously designed for enterprises prioritizing these aspects, offering unmatched speed, capacity, and robust security features to support your business objectives.



Empower Your Team with  
Unmatched Performance



Safeguard Information with  
Advanced Data Security



Simplify IT Management with  
Seamless Control & Monitoring



Optimize Costs and Reduce  
Maintenance

# EMPOWER YOUR TEAM WITH UNMATCHED PERFORMANCE



## Accelerate Workflow with High-Speed Printing

With print speeds of up to 42 ppm (A4) / 70 ppm (A5L), the Elite Pro Series boosts productivity by delivering rapid output. The first page prints in just 5.9s, significantly reducing downtime.



## Effortless Duplex Operations

Simplify document management with automatic duplex printing, copying, and scanning via a 50-page Duplex Automatic Document Feeder (DADF), enhancing efficiency and reducing manual effort.



## High-Capacity Paper Handling for Large Jobs

Accommodate extensive printing requirements with expandable paper handling options. Two optional 550-sheet trays bring the maximum paper feed capacity to 1,410 sheets, ensuring you're prepared for a high volume of work.



## Tailored for Professional Document Handling – Legal Size Flatbed (BM5300 series only)

For industries requiring legal-size documents, such as law firms or government offices, the BM5300 series offers a legal-size flatbed scanner, catering specifically to your document handling needs.



# ADVANCED DATA SECURITY



## Safeguard Information with Advanced Data Security

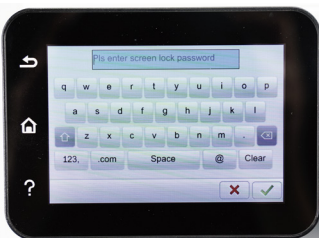
Fortified Network Security

Protect your networked print environment with built-in IPsec, SSL/TLS, and 802.1x support, defending against unauthorized access and potential threats.



## Protect Your Print Jobs with Secure Printing

Protect sensitive information with a 4-digit release code, ensuring that only authorized users access print jobs and preventing information leaks.



## Controlled Access Management

Restrict access to printer interface functions and control panel to prevent unauthorized changes and safeguard against potential security threats and viruses.

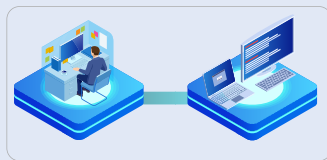


# SIMPLIFY IT MANAGEMENT WITH SEAMLESS CONTROL & MONITORING



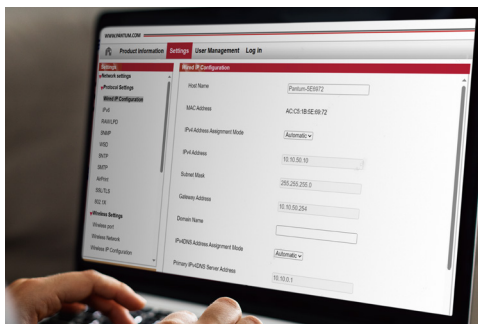
## Smart Printer Management

PiPME (Pantum Smart Printer Management Expert) provides IT administrators powerful tools to monitor and configure printers within a network. Monitor consumables, receive alerts, and generate reports effortlessly to maintain optimal printer performance.



## Simplified Webpage Configuration

IT managers and users can access the printer from a web browser by simply entering the IP address in the URL. You can directly check and change settings such as print settings, network settings, interface access restrictions, administrator passwords, etc.



## Embedded MPS Solutions

Leverage Pantum's Software Development Kit (SDK) to integrate mainstream Managed Print Services (MPS) software, enabling advanced remote control, management, and user restriction capabilities.



# OPTIMIZE COSTS AND REDUCE MAINTENANCE



## Automatic Duplex Printing for Reducing Costs

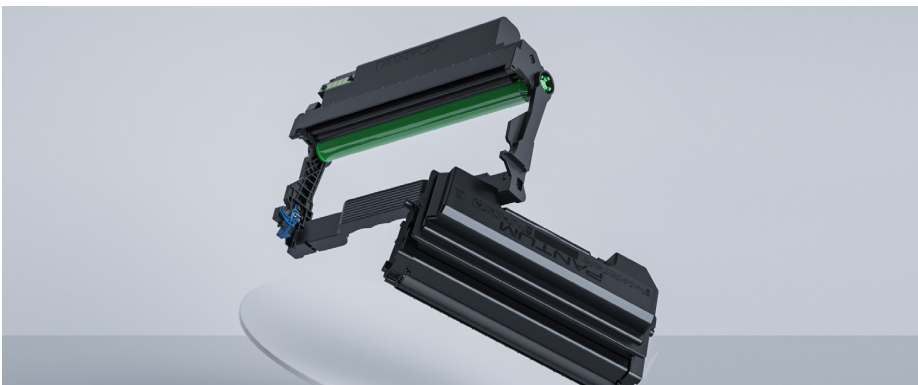
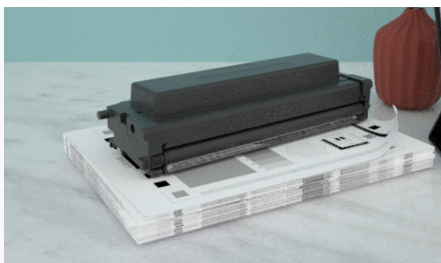
Save paper and costs by setting all print jobs to automatically print on both sides, promoting a more sustainable and efficient office.



## Cost-Efficient High-Yield Toner Cartridges

Handle large print volumes easily, thanks to high-capacity toner cartridges that can print up to 15,000\* pages, reducing running costs and downtime.

\* Approx declared yield value by ISO/IEC 19752  
Individual users will experience different results affected by different printing habits and environments.



## Economy Toner-Saving Mode for Savings

Optimize your budget with a toner-saving mode that reduces toner usage, extending cartridge life and delivering lighter prints without sacrificing quality.

# ADDITIONAL FEATURES TO ENHANCE YOUR WORKFLOW



## Instant Driver Setup in One Click

Eliminate setup headaches with a straightforward, one-click driver installation process, getting you ready to print in no time.



## Print on the go with mobile solutions

Print from anywhere with support for AirPrint\*, Mopria, and the Pantum app, making printing from smartphones and tablets effortless.

\*Support AirPrint, Mopria™ Print Service, Wi-Fi direct connection, and Pantum App, enabling users to enjoy wireless printing from various mobile devices.

\* Apple, AirPrint Mac and macOS are trademarks of Apple Inc., registered in the U.S. and other countries. Use of the Works with Apple badge means that an accessory has been designed to work specifically with the technology identified in the badge and has been certified by the developer to meet Apple performance standards.

\* Mopria makes it easier to print and scan from your Android and Windows. For Android, Mopria™ Print Service and Mopria Scan are available for installation in the Google Play™ store. If you want to get more information, please visit <https://www.mopria.org>



## Wi-Fi® 10s Quick Wi-Fi Direct Connectivity

Connect to the printer via Wi-Fi Direct in just 10 seconds, making it easy to print without needing an internet connection, ideal for quick and secure printing needs.

**ELITE SERIES**

ELITE PRO SERIES



Marketing name	BP5200DN	BP5200DW
Model	PT2AB1A-S1-01	PT2AB1A-S1A-01
Print		
Print speed	42ppm(A4)/44ppm(Letter)	42ppm(A4)/44ppm(Letter)
First print out time	≤5.9s	≤5.9s
Recommended monthly page volume	750 to 4,000 pages	750 to 4,000 pages
Printer language	PCL5e, PCL6, PS, GDI	PCL5e, PCL6, PS, GDI
Control panel	2 line LCD	2 line LCD
Processor speed	1.2GHz	1.2GHz
Memory	1GB	1GB
Duplex printing	Yes	Yes
Mobile printing capability	AirPrint, Mopria™ Print Service, APP print(iOS App/Android App)	
NFC function	No	Yes
Paper Handling		
Paper input tray	Standard paper tray: 250 Pages, Optional paper tray: 550 Pages(Maximum: 2) Multipurpose paper tray: 60 Pages	
Paper output tray	150 Pages	150 Pages
Media types	A4, A5, JIS B5, ISO B5, A6, Letter, Legal, Executive, Folio, Oficio, Statement, Japanese Postcard, Monarch Env, DL Env, C5 Env, C6 Env, No.10 Env, ZL, Big 16K, Big 32K, 16K, 32K, B6, Yougata4, Postcard, Younaga3, Nagagata3, Yougata2	
Media weight	Input tray: 60~120g/㎡; Multipurpose tray: 60~200g/㎡; Optional tray: 60~120g/㎡	
General		
Dimensions (D*W*H)	366*350*260mm	366*350*260mm
Product weight (with cartridge)	9.3kg	9.3kg
Operating temperature range	Recommended temperature: 10~32°C Humidity range: 20% ~ 80% Altitude: ≤3000m	Recommended temperature: 10~32°C Humidity range: 20% ~ 80% Altitude: ≤3000m
Input voltage	110V: AC100-127V, 50/60Hz, 13A; 220V: AC220-240V, 50/60Hz, 6.5A	110V: AC100-127V, 50/60Hz, 13A; 220V: AC220-240V, 50/60Hz, 6.5A
Noise level	Print: ≤56dB(A) Ready: ≤30dB(A) Mute: ≤50dB(A)	Print: ≤56dB(A) Ready: ≤30dB(A) Mute: ≤50dB(A)
Power consumption	print average: ≤650W ; ready: ≤8W; sleep: ≤1.4W shutdown ≤0.5W	print average: ≤650W ; ready: ≤8W; sleep: ≤1.4W shutdown ≤0.5W
Operating system compatibility	Microsoft Windows: Server2008/Server2012/Server2016/2019/2022/XP/Win7/Win8/Win8.1/Win10/win11 (32/64 bit) Mac OS: 10.9~14.3 Linux Ubuntu 16.04/18.04/20.04/22.04/Debian 10.0/Centos 7 (32/64 bit, intel Processor) ; Astra Linux Special Edition V1.6/Redhat 8.2.0/ Centos 8.2(64 bit, intel Processor) Android: 8.0 and later iOSAPP: iOS 13 and later HarmonyAPP: support HarmonyOS 2-4, HarmonyOS NEXT	
Interface	High-speed USB 2.0; IEEE 802.3 10/100/1000Base-Tx ; USB interface: rear USB DEV (1)	High-speed USB 2.0; IEEE 802.3 10/100/1000Base-Tx ; USB interface: rear USB DEV (1) Bluetooth interface
Supplies		
Consumable type	Toner Cartridge & Drum Unit	Toner Cartridge & Drum Unit
Starter cartridge <sup>(1)</sup>	TL-*5220: 3,000 Pages	TL-*5220: 3,000 Pages
Starter drum unit <sup>(1)</sup>	DL-*5220: 30,000 Pages	DL-*5220: 30,000 Pages
Standard cartridge <sup>(2)</sup>	TL-*5220: 3,000 Pages; TL-*5220H: 6,000 Pages; TL-*5220X: 15,000 Pages	TL-*5220: 3,000 Pages; TL-*5220H: 6,000 Pages; TL-*5220X: 15,000 Pages
Standard drum unit <sup>(1)</sup>	DL-*5220: 30,000 Pages	DL-*5220: 30,000 Pages

Note:

(1) Approx declared yield value in accordance with ISO/IEC 19752.

(2) Drum unit yield value is based on 3 pages per print job and 5% coverage.

Individual users will experience different results affected by different printing habits and printing environment.

# ELITE SERIES

ELITE PRO SERIES



*Running Forward*

Marketing name	BM5220ADN	BM5220ADW
Model	PT2AB3A-S1-01	PT2AB3A-S1A-01
Print		
Print speed	42ppm(A4)/44ppm(Letter)	42ppm(A4)/44ppm(Letter)
First print out time	≤5.9s	≤5.9s
Recommended monthly page volume	750 to 4,000 pages	750 to 4,000 pages
Printer language	PCL5e, PCL6, PS, GDI	PCL5e, PCL6, PS, GDI
Processor speed	1.2GHz	1.2GHz
Memory	1GB	1GB
Control panel	3.5 inch touch screen	3.5 inch touch screen
Auto duplex print	Yes	Yes
Duplex print speed	20spm(A4)/21spm(Letter)	20spm(A4)/21spm(Letter)
U-disk print	Yes	Yes
Mobile print	AirPrint, Mopria™ Print Service, Mopria Scan, APP print(iOS App/Android App)	
NFC function	No	Yes
Copy		
Copy speed	FB single-sided A4: 42cpm FB single-sided Letter: 44cpm ADF single-sided A4: 40cpm ADF double-sided A4: 20 pages/min	FB single-sided A4: 42cpm FB single-sided Letter: 44cpm ADF single-sided A4: 40cpm ADF double-sided A4: 20 pages/min
First copy out time	FB: less than 10s ; ADF: less than 11s; ADF duplex ≤20s	FB: less than 10s ; ADF: less than 11s; ADF duplex ≤20s
Maximum copy pages	99 pages	99 pages
Copy reduce / enlarge settings	25%-400%	25%-400%
Copy special features	Copy settings: original size, copy to, duplex copy, image quality, brightness, zoom, collate, multiple pages in one, clone, poster, flip mode	Copy settings: original size, copy to, duplex copy, image quality, brightness, zoom, collate, multiple pages in one, clone, poster, flip mode
Scan		
Scanner type	Flatbed+ DADF	Flatbed+ DADF
Auto duplex scan	Yes	Yes
ADF capacity	50 Pages	50 Pages
Maximum scan size	FB: 216x297mm (Legal) ADF: 216x356mm	FB: 216x297mm (Legal) ADF: 216x356mm
Maximum scan dpi	FB: pull scan 2400x2400dpi FB: push scan 1200 x 1200dpi ADF: pull scan/push scan: 600x600dpi	FB: pull scan 2400x2400dpi FB: push scan 1200 x 1200dpi ADF: pull scan/push scan: 600x600dpi
Scan destinations	Scan to PC, Mail, FTP, SMB, U-disk	Scan to PC, Mail, FTP, SMB, U-disk
Paper Handling		
Paper inputtray	250 Pages	250 Pages
Optional input paper tray	550 Pages(Maximum:2)	550 Pages(Maximum:2)
Multipurpose tray	60 Pages	60 Pages
Maximum paper inputcapacity	1,410 Pages	1,410 Pages
Paper output tray	150 Pages	150 Pages
Media types	Automatic paper feeder: plain paper, thick paper, transparent film, thin paper, recycled paper Multi-purpose paper feeder: plain paper, thick paper, card paper, label paper, envelope, thin paper, extra thick paper    Optional paper tray: plain paper, thick paper, thin paper	
Media sizes	A4, A5, JIS B5, ISO B5, A6, Letter, Legal, Executive, Folio, Oficio, Statement, Japanese Postcard, Monarch Env, DL Env, C5 Env, C6 Env, No.10 Env, ZL, Big 16K, Big 32K, 16K, 32K, B6, Yougata4, Postcard, Younaga3, Nagaata3, Vougata2 Minimum support ed size: 80mm x 148mm    Maximum support ed size: 216mm x 356mm	
Media weight	Input tray: 60-120g/m <sup>2</sup> ; Multipurpose tray: 60-200g/m <sup>2</sup> ; Optional tray: 60-120g/m <sup>2</sup>	Input tray: 60-120g/m <sup>2</sup> ; Multipurpose tray: 60-200g/m <sup>2</sup> ; Optional tray: 60-120g/m <sup>2</sup>
General		
Dimensions (D*W*H)	416*368*378mm	416*368*378mm



ELITE SERIES

ELITE PRO SERIES



Marketing name	BM5220ADN	BM5220ADW
Model	PT2AB3A-S1-01	PT2AB3A-S1A-01
General		
Product weight (with cartridge)	12.7kg	12.7kg
Operating temperature range	Recommended temperature: 10~32°C; Humidity range: 20%~80%	Recommended temperature: 10~32°C; Humidity range: 20%~80%
Input voltage	110V: AC100-127V, 50/60Hz, 12A; 220V: AC220-240V,50/60Hz, 6.5A	110V: AC100-127V, 50/60Hz, 12A; 220V: AC220-240V,50/60Hz, 6.5A
Noise	Ready≤30dB(A); Print≤56dB(A); Scan≤56dB(A); Copy≤57dB(A); Mute printing≤50dB(A)	Ready≤30dB(A); Print≤56dB(A); Scan≤56dB(A); Copy≤57dB(A); Mute printing≤50dB(A)
Power consumption	Printaverage: ≤650W; Ready:≤8W; Sleep: ≤1.4W Shutdown ≤0.5W	Printaverage: ≤650W; Ready:≤8W; Sleep: ≤1.4W Shutdown ≤0.5W
Operating system compatibility	Microsoft Windows: Server2008/Server2012/Server2016/2019/2022/XP/Win7/Win8/Win8.1/Win10/win11 (32/64 bit) Mac OS:10.9~14.3 Linux Ubuntu 16.04/18.04/20.04/22.04/Debian 10.0/Centos 7 (32/64 bit,intel Processor) ; Astra Linux Special Edition V1.6/Redhat 8.2.0/ Centos 8.2(64 bit,intel Processor) Android: 8.0 and later iOSAPP:iOS 13 and later HarmonyAPP:support HarmonyOS 2-4, HarmonyOS NEXT	
Interface	High-speed USB 2.0; IEEE 802.3 10/100/1000Base-Tx ; USB interface: front USB HOST (1), rear USB DEV (1)	High-speed USB 2.0; IEEE 802.3 10/100/1000Base-Tx; WiFi (2.4G/5G); IEEE 802.11a/b/g/n+Bluetooth USB interface: front USB HOST (1), rear USB DEV (1) Bluetooth interface
Supplies		
Consumable type	Toner Cartridge & Drum Unit	Toner Cartridge & Drum Unit
Starter cartridge <sup>(1)</sup>	TL-*5220:3,000 Pages	TL-*5220:3,000 Pages
Starter drum unit <sup>(2)</sup>	DL-*5220:30,000 Pages	DL-*5220:30,000 Pages
Standard cartridge <sup>(1)</sup>	TL-*5220:3,000 Pages; TL-*5220H: 6,000 Pages; TL-*5220X: 15,000 Pages	TL-*5220:3,000 Pages; TL-*5220H: 6,000 Pages; TL-*5220X: 15,000 Pages
Starter drum unit <sup>(2)</sup>	DL-*5220:30,000 Pages	DL-*5220:30,000 Pages

Note:  
(1)Approx declared yield value in accordance with ISO/IEC 19752.  
(2)Drum unit yield value is based on 3 pages per print job and 5% coverage.  
Individual users will experience different results affected by different printing habits and printing environment.

# ELITE SERIES

ELITE PRO SERIES



Marketing name	BM5300ADN	BM5300ADW
Model	PT2AB3B-S1-01	PT2AB3B-S1A-01
Print		
Print speed	42ppm(A4)/44ppm(Letter)	42ppm(A4)/44ppm(Letter)
First print out time	≤5.9s	≤5.9s
Recommended monthly page volume	750 to 4,000 pages	750 to 4,000 pages
Printer language	PCL5e, PCL6, PS, GDI	PCL5e, PCL6, PS, GDI
Processor speed	1.2GHz	1.2GHz
Memory	1GB	1GB
Control panel	3.5 inch touch screen	3.5 inch touch screen
Auto duplex print	Yes	Yes
Duplex print speed	20spm(A4)/21spm(Letter)	20spm(A4)/21spm(Letter)
U-disk print	Yes	Yes
Mobile print	AirPrint, Mopria™ Print Service, Mopria Scan, APP print(iOS App/Android App)	
NFC function	No	Yes
Copy		
Copy speed	FB single-sided A4: 42cpm FB single-sided Letter: 44cpm ADF single-sided A4: 40cpm; ADF double-sided A4: 20 pages/min	FB single-sided A4: 42cpm FB single-sided Letter: 44cpm ADF single-sided A4: 40cpm; ADF double-sided A4: 20 pages/min
First copy out time	FB: less than 10s ; ADF: less than 11s; ADF duplex ≤20s	FB: less than 10s ; ADF: less than 11s; ADF duplex ≤20s
Maximum copy pages	99 pages	99 pages
Copy reduce / enlarge settings	25%~400%	25%~400%
Copy special features	Copy settings: original size, copy to, duplex copy, image quality, brightness, zoom, collate, multiple pages in one, clone, poster, flip mode	Copy settings: original size, copy to, duplex copy, image quality, brightness, zoom, collate, multiple pages in one, clone, poster, flip mode
Scan		
Scanner type	Flatbed+ DADF	Flatbed+ DADF
Auto duplex scan	Yes	Yes
ADF capacity	50 Pages	50 Pages
Maximum scan size	FB: 216x297mm (Legal) ADF: 216x356mm	FB: 216x297mm (Legal) ADF: 216x356mm
Maximum scan dpi	FB: pull scan 2400x2400dpi FB: push scan 1200 x 1200dpi ADF: pull scan/push scan: 600x600dpi	FB: pull scan 2400x2400dpi FB: push scan 1200 x 1200dpi ADF: pull scan/push scan: 600x600dpi
Scan destinations	Scan to PC, Mail, FTP, SMB, U-disk	Scan to PC, Mail, FTP, SMB, U-disk
Paper Handling		
Paper inputtray	250 Pages	250 Pages
Optional input paper tray	550 Pages(Maximum:2)	550 Pages(Maximum:2)
Multipurpose tray	60 Pages	60 Pages
Maximum paper inputcapacity	1,410 Pages	1,410 Pages
Paper output tray	150 Pages	150 Pages
Media types	Automatic paper feeder: plain paper, thick paper, transparent film, thin paper, recycled paper Multi-purpose paper feeder: plain paper, thick paper, card paper, label paper, envelope, thin paper, extra thick paper    Optional paper tray: plain paper, thick paper, thin paper	
Media sizes	A4, A5, JIS B5, ISO B5, A6, Letter, Legal, Executive, Folio, Oficio, Statement, Japanese Postcard, Monarch Env, DL Env, C5 Env, C6 Env, No.10 Env, ZL, Big 16K, Big 32K, 16k, 32k, B6, Yougata4, Postcard, Younaga3, Nagata3, Vougate2 Minimum support ed size: 80mm x 148mm    Maximum support ed size: 216mm x 356mm	
Media weight	Input tray: 60~120g/m <sup>2</sup> ; Multipurpose tray: 60~200g/m <sup>2</sup> ; Optional tray:60~120g/m <sup>2</sup>	Input tray: 60~120g/m <sup>2</sup> ; Multipurpose tray: 60~200g/m <sup>2</sup> ; Optional tray:60~120g/m <sup>2</sup>
General		
Dimensions (D*W*H)	476*368*378mm	476*368*378mm

ELITE SERIES

ELITE PRO SERIES



Marketing name	BM5300ADN	BM5300ADW
Model	PT2AB3B-S1-01	PT2AB3B-S1A-01
General		
Product weight (with cartridge)	13.1kg	13.1kg
Operating temperature range	Recommended temperature: 10~32°C; Humidity range: 20%~80%	Recommended temperature: 10~32°C; Humidity range: 20%~80%
Input voltage	110V: AC100-127V, 50/60Hz, 12A; 220V: AC220-240V,50/60Hz, 6.5A	110V: AC100-127V, 50/60Hz, 12A; 220V: AC220-240V,50/60Hz, 6.5A
Noise	Ready≤30dB(A); Print≤56dB(A); Scan≤56dB(A); Copy≤57dB(A); Mute printing≤50dB(A)	Ready≤30dB(A); Print≤56dB(A); Scan≤56dB(A); Copy≤57dB(A); Mute printing≤50dB(A)
Power consumption	Printaverage: ≤650W; Ready:≤8W; Sleep: ≤1.4W Shutdown ≤0.5W	Printaverage: ≤650W; Ready:≤8W; Sleep: ≤1.4W Shutdown ≤0.5W
Operating system compatibility	Microsoft Windows: Server2008/Server2012/Server2016/2019/2022/XP/Win7/Win8/Win8.1/Win10/win11 (32/64 bit) Mac OS:10.9~14.3 Linux Ubuntu 16.04/18.04/20.04/22.04/Debian 10.0/Centos 7 (32/64 bit,intel Processor) ; Astra Linux Special Edition V1.6/Redhat 8.2.0/ Centos 8.2(64 bit,intel Processor) Android: 8.0 and later iOSAPP:iOS 13 and later HarmonyAPP:support HarmonyOS 2-4, HarmonyOS NEXT	
Interface	High-speed USB 2.0; IEEE 802.3 10/100/1000Base-Tx ; USB interface: front USB HOST (1), rear USB DEV (1)	High-speed USB 2.0; IEEE 802.3 10/100/1000Base-Tx; WiFi (2.4G/5G); IEEE 802.11a/b/g/n+Bluetooth USB interface: front USB HOST (1), rear USB DEV (1) Bluetooth interface
Supplies		
Consumable type	Toner Cartridge & Drum Unit	Toner Cartridge & Drum Unit
Starter cartridge <sup>(1)</sup>	TL-*5220:3,000 Pages	TL-*5220:3,000 Pages
Starter drum unit <sup>(2)</sup>	DL-*5220:30,000 Pages	DL-*5220:30,000 Pages
Standard cartridge <sup>(1)</sup>	TL-*5220:3,000 Pages; TL-*5220H: 6,000 Pages; TL-*5220X: 15,000 Pages	TL-*5220:3,000 Pages; TL-*5220H: 6,000 Pages; TL-*5220X: 15,000 Pages
Starter drum unit <sup>(2)</sup>	DL-*5220:30,000 Pages	DL-*5220:30,000 Pages

Note:  
(1) Approx declared yield value in accordance with ISO/IEC 19752.  
(2) Drum unit yield value is based on 3 pages per print job and 9% coverage.  
Individual users will experience different results affected by different printing habits and printing environment.